

ALL INDICATIONS ONE BOND

CLEARFIL™ Universal Bond Quick

One-hand application. Less technique sensitive.
Less risk of contamination.



THE DENTAL BONDING THAT WORKS INSTANTLY

CLEARFIL™ UNIVERSAL BOND QUICK

CLEARFIL™ Universal Bond Quick from Kuraray Noritake Dental is a universal bonding that works instantly. Just apply, dry and light cure. That's all. No waiting, no multiple layers, no extensive rubbing time. Instead CLEARFIL™ Universal BOND Quick uses Kuraray Noritake Dental's rapid bond technology to achieve lasting bond strength in one simple procedure.

UNIFORM RESULTS, OPTIMUM ADHESION

We are the developer of some world's innovative and advanced dental bonding agents and cements such as CLEARFIL™ SE Bond and PANAVIA™. With CLEARFIL™ Universal Bond Quick, we have combined all our expertise and technology to create a new dental bonding agents that deliver a faster, consistent and lasting result.

PREDICTABLE RESULTS

CLEARFIL™ Universal Bond Quick offers dentists a predictable single-step procedure. There is no need to wait for bonding penetration, multiple layer application or extensive rubbing time. Instead you can achieve a striking optimum result.



APPLY AND PROCEED

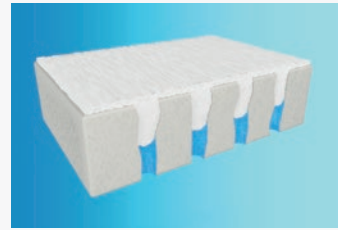
CLEARFIL™ Universal Bond Quick reliably bonds all direct restorations, core build-ups and even indirect restorations and repairs. Unlike other one-bottle universal adhesives which utilize 'slow monomers' which need time to penetrate, there's no need to wait for it to penetrate the dentin before you proceed.



Our rapid bond technology combines our MDP monomer with new hydrophilic amide monomers which work together to deliver optimal stability and resistance to moisture for a lasting result. MDP monomer creates a strong chemical bond to hydroxyapatite. Having been in use for more than 20 years, MDP has a proven excellence in adhesion.

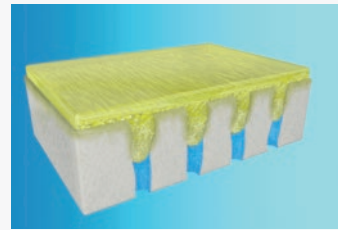


Our new hydrophilic amide monomers offer both optimal penetration due to its high hydrophilicity before curing AND optimal stability due to its highly cross linked polymer network after curing.



PREPARED DENTIN WITH SMEAR LAYER.

Due to its hydrophilicity we need a very hydrophilic bonding to be able to optimally penetrate the dentin.



DENTIN BONDED WITH CLEARFIL™ UNIVERSAL BOND QUICK.

During curing CLEARFIL™ Universal Bond Quick creates a highly cross linked polymer network. As a result of this network, the bonding has a very low water absorption which gives a long lasting restoration

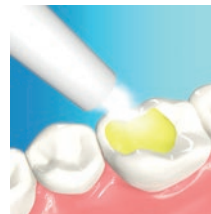
NO WAITING, NO EXTENSIVE RUBBING, NO MULTIPLE LAYERS.



Apply with rubbing motion **



No waiting



Dry



Light Cure

** APPLY with a rubbing motion and PROCEED



PROCEDURAL FREEDOM

CLEARFIL™ Universal Bond Quick also has excellent curing properties, enabling a highly cross linked polymer network inside the bonding. The result is a strong adhesive that creates a lasting, durable bonding layer that has a very low water absorption.

Unlike traditional dental bonding agents that require waiting time, extensive rubbing and multiple layers in order to deliver an optimum result, with CLEARFIL™ Universal Bond Quick your restorative procedures are carried out to the exceptionally high standards.





Exceptional levels of adhesion also result in a bond that lasts with minimal risk of remedial work in the future. And, because there's no need to wait before you go ahead, procedures take less time than with most other available bondings, benefiting both patient and practitioner.

DIRECT COMPOSITE RESTORATIONS*

CLEARFIL™ UNIVERSAL BOND QUICK Kuraray Noritake	APPLY with a rubbing motion AND PROCEED	Blowing mild air for more than 5 seconds	Light cure for 10 seconds**
---	--	--	-----------------------------

UNIVERSAL ADHESIVES

	Scotchbond Universal*** 3M	Apply and rub it in for 20 seconds	Gentle stream of air for about 5 seconds	Light cure for 10 seconds
	OptiBond XTR*** Kerr	Apply primer with a brushing motion for 20 seconds. Apply adhesive with light brushing motion for 15 sec	Air thin for 5 seconds with medium air pressure for both primer and adhesive	Light cure for 10 seconds
	Xeno Select*** Dentsply	Agitate the adhesive for 20 seconds	Dry air for at least 5 seconds	Light cure for 10 seconds
	Adhese Universal*** Ivoclar Vivadent	Scrub for at least 20 seconds	Disperse with compressed air until a glossy, immobile layer results	Light cure for 10 seconds

* Please follow the Instructions for Use for detailed technique and instructions

** 5 seconds for high power LED (Light intensity more than 1500mW/cm²)

*** Trademarks are property of their respective owners

Data compiled from respective manufacturer's instruction for use.



CLEARFIL™ UNIVERSAL BOND QUICK
Kuraray Noritake

APPLY with a rubbing motion AND PROCEED

Blowing mild air for more than 5 seconds

Light cure for 10 seconds**

** 5 seconds for high power LED (Light intensity more than 1500mW/cm²)

TOTAL-ETCH ADHESIVES



Adper Scotchbond 1XT
3M

Apply 2-3 coats, agitate for 15 seconds with gentle agitation

Gently air thin for 5 seconds

Light cure for 10 seconds



OptiBond Solo Plus
Kerr

Apply for 15 seconds, using light brushing motion

Air thin for 3 seconds

Light cure for 20 seconds



ExiTE F
Ivoclar Vivadent

Apply and agitate for at least 10 seconds

Disperse to a thin layer with a weak stream of air

Light cure for 10 seconds



Prime&Bond NT
Dentsply

Apply and remain undisturbed for 20 seconds

Gently drying with clean, dry air from a dental syringe for at least 5 seconds

Light cure for 10 seconds

SELF-ETCH ADHESIVES

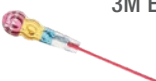


CLEARFIL™ S3 BOND
Kuraray Noritake

Apply and leave it in place for 10 seconds

Blowing mild air for more than 5 seconds

Light cure for 10 seconds



Adper Prompt L-Pop***
3M ESPE

Massage it in for 15 sec, applying pressure. Apply a second coat after dry

Use a gentle stream of air to thoroughly dry the adhesive to a thin film. Again, use a gentle stream of air to thoroughly dry the adhesive to a thin film

Light cure for 10 seconds



OptiBond All-In-One***
Kerr

Apply twice with brushing motion for 20 seconds each time

Dry with gentle air first and then medium air for at least 5 seconds

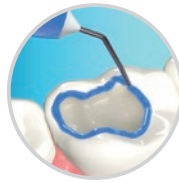
Light cure for 10 seconds

A TRULY UNIVERSAL BOND

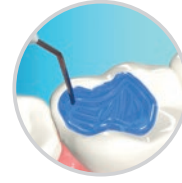
ALL ETCHING TECHNIQUES



Self-etch
(no phosphoric acid)



Selective-etch
(phosphoric acid on enamel)



Total-etch
(phosphoric acid on enamel and dentin)

Thanks to CLEARFIL™ Universal Bond Quick, it is really easy to make direct composite or compomer restorations. Simply use it the way you want. Self-etch, selective-etch or total-etch. You decide. But whichever way, CLEARFIL™ Universal Bond Quick delivers optimum results without the need to wait. Just apply and proceed.

ALL PROCEDURES



Direct



Core build-up



Indirect



Repair

CLEARFIL™ Universal Bond Quick can be used with almost all composite materials and also in cases where dual curing materials are required, for instance in post and core procedures. CLEARFIL™ DC Activator activates the dual-curing mechanism, however the addition of CLEARFIL™ DC Activator to the adhesive is not required when using it with CLEARFIL™ DC CORE PLUS or PANAVIA™ SA Cement Universal. It also acts as an excellent surface conditioner when priming indirect materials such as zirconia, glass-ceramics or metals or during intra-oral repairs. Just apply and proceed.

UNIVERSAL USE



INDIRECT CEMENTATION
with PANAVIA™ SA CEMENT UNIVERSAL

THE PERFECT TEAM FOR CEMENTATION AND CORE BUILD-UPS

CLEARFIL™ Universal Bond Quick is the perfect complement to CLEARFIL™ DC CORE Plus and PANAVIA™ SA Cement Universal. Due to its specific accelerator for self-curing, a separate primer is not needed.

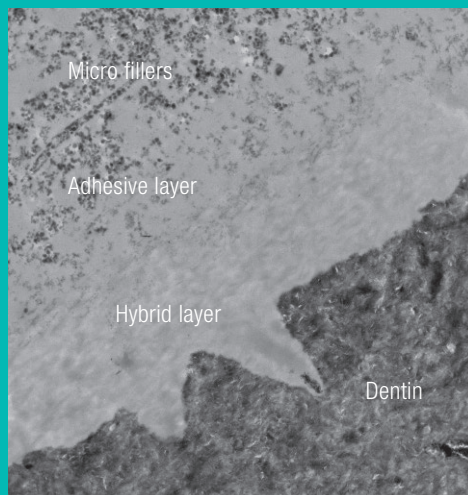
DIRECT RESTORATION with
CLEARFIL MAJESTY™ ES-2
PREMIUM / CLASSIC & ES-FLOW

CORE BUILD-UP with
CLEARFIL™ DC CORE PLUS

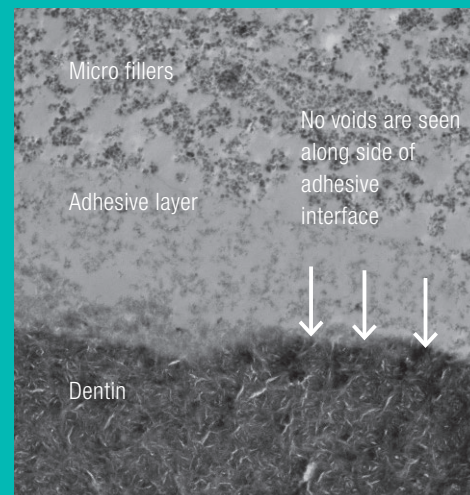
RESEARCH

OPTIMAL DENTIN BONDING

By introducing rapid bond technology we are assured of a quick developing and tight bonding to the materials we want to bond to. Especially to dentin, being the most challenging substrate. Rapid bond technology used in CLEARFIL™ Universal Bond Quick is proven to be very effective. A tight seal of the dentin without any voids is the result. Using either self-etch or total-etch show a tight interaction zone between the bonding and the dentin. No voids were seen.



Etch and rinse mode
TEM, magnification 2.000 x



Self-etch mode
TEM, magnification 2.000 x

UCL-DRIM-STUDY

BONDING EFFECTIVENESS OF A NOVEL BONDING (CLEARFIL™ UNIVERSAL BOND QUICK) TO DENTIN

In this study the bond strength was tested between human dentin and composite. Shear bond strength of the bonding interface was measured. Three universal all-in-one and two self etch 2-component bonding systems were tested. Samples were stored in distilled water for 24 hours at 37°C.

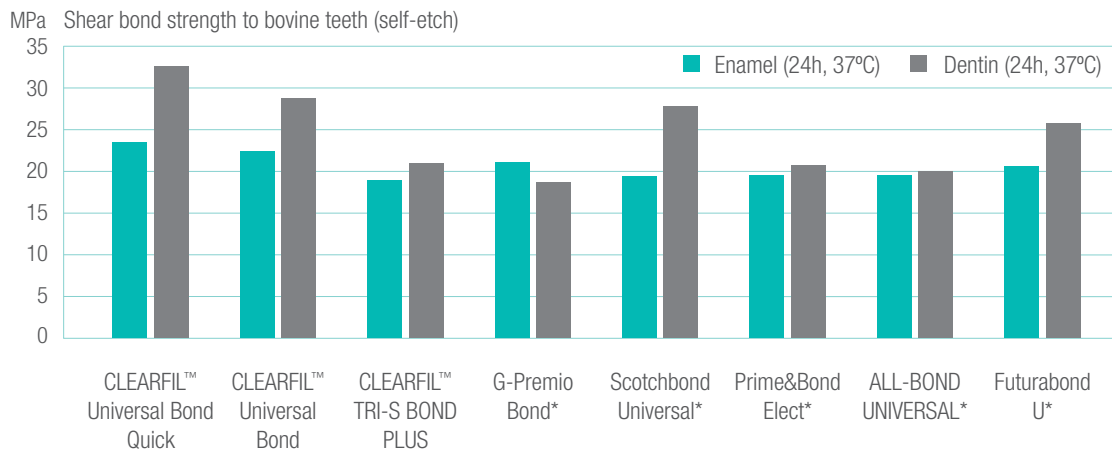
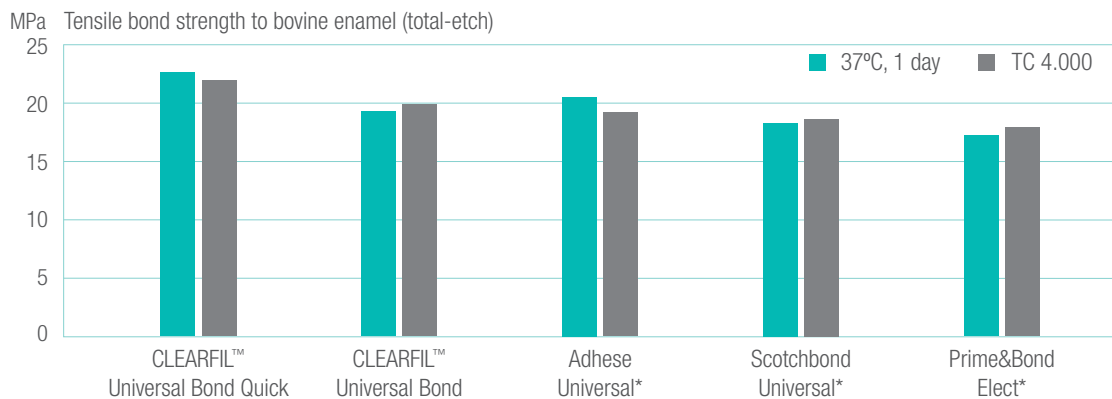
Study performed by UCL_DRIM, Louvain la Neuve, Belgium,

“Among the all-in-one universal alternatives, the new CLEARFIL™ Universal Bond Quick technology appears equally efficient despite the absence of waiting time after application, making it a more user-friendly and more convenient option than its competitors.”

*Dr. Julian G. Leprince,
Cliniques universitaires Saint-Luc UCL, Bruxelles*

BOND STRENGTH

To enamel (total-etch) and to enamel and dentin (self-etch)



Kuraray Noritake Dental Inc. (Ultradent Method) * Not a trademark of Kuraray Noritake Dental
 **In this research, CLEARFIL™ Universal Bond Quick is applied with a rubbing motion for 3 seconds.

THIN FILM LAYER

CLEARFIL™ Universal Bond Quick comprises a thin film layer of just 5 to 10 µm making it aesthetically pleasing even in the most demanding anterior restorations. Its innovative new amide monomers create a lot of crosslinks to improve the stability of the thin film thickness. This in turn delivers a superior bonding layer which is resistant to moisture and it shows good esthetics at margin of anterior restorations.



SPECIFICATIONS

IMPROVED BOTTLE DELIVERY

With the new flip-top cap the bottle can be opened and closed with one hand, without efforts. With the unique nozzle design for dispensing control, the bonding is dispensed in a clear and accurate way, there is no risk of spills.



WIDE INDICATION RANGE

- ✓ Direct restorations using light-cured composite resin
- ✓ Cavity sealing as a pretreatment for indirect restorations
- ✓ Treatment of exposed root surfaces
- ✓ Treatment of hypersensitive teeth
- ✓ Intraoral repairs of fractured restorations
- ✓ Post cementation and core build-ups
- ✓ Cementation of indirect restorations

TECHNICAL SPECIFICATIONS

Film thickness:	5-10 µm
Film thickness with dc activator:	<1 µm
Working time with light blocking plate:	7 min.
Working time with dc activator:	90 sec.

APPLICATION TIME FOR DIRECT RESTORATION

	SELF-ETCH	TOTAL-ETCH/ SELECTIVE-ETCH
Phosphoric acid etching	-	10 sec*
Bond application	Apply with rubbing motion; No waiting time needed	Apply with rubbing motion; No waiting time needed
Air-dry	5 sec	5 sec
Light cure	10 sec*	10 sec**
Total application time	15 sec	25 sec

* excluding rinsing and drying time

** 5 sec. for high power LED (Light intensity: more than 1500 mW/cm²)

PRODUCT ASSORTMENT

BOTTLE STANDARD KIT

#3571-EU Bottle (5 ml),
K-ETCHANT Syringe (3 ml),
Applicator Brush (x 50 pcs),
Needle Tip (x 20 pcs),
Mixing Dish, Light Blocking Plate



BOTTLE REFILL

#3572-EU Bottle (5 ml)



BOTTLE VALUE PACK

#3574-EU Bottle (3 x 5 ml)



UNIT DOSE STANDARD PACK

#3577-EU Unit Dose (50 pcs x 0.1 ml),
K-ETCHANT Syringe (3 ml),
Applicator Brush (x 50 pcs),
Needle Tip (x 20 pcs)



CLEARFIL™ DC ACTIVATOR

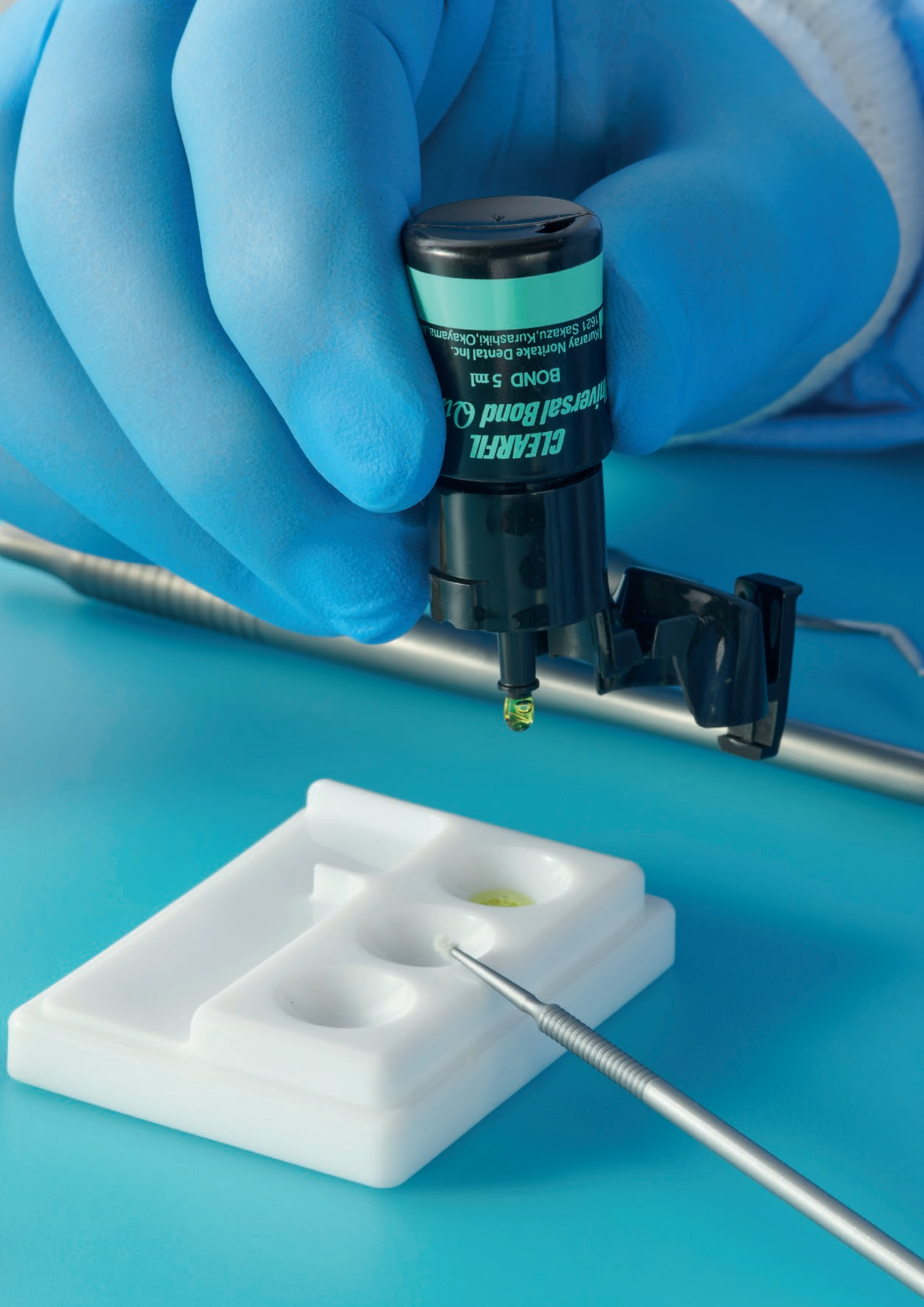
#3250- EU 1 bottle (4 ml)



K-ETCHANT SYRINGE

#3252- EU K-ETCHANT Syringe (2 x 3 ml),
Needle Tip (x 40 pcs)
Needle Tips
#3253- EU Needle Tip (x 20 pcs)







EU Importer

Kuraray Europe GmbH

Philipp-Reis-Strasse 4,
65795 Hattersheim am Main, Germany

Phone +49 (0)69 305 35 835

Fax +49 (0)69 305 98 35 835

www.kuraraynoritake.eu

centralmarketing@kuraray.com

- Before using this product, be sure to read the Instructions for Use supplied with the product.
- The specifications and appearance of the product are subject to change without notice.
- Printed color can be slightly different from actual color.

"CLEARFIL" and "PANAVIA" are registered trademarks of Kuraray Co., Ltd.



Kuraray Noritake Dental Inc.

1621 Sakazu, Kurashiki, Okayama 710-0801, Japan
Website www.kuraraynoritake.com

